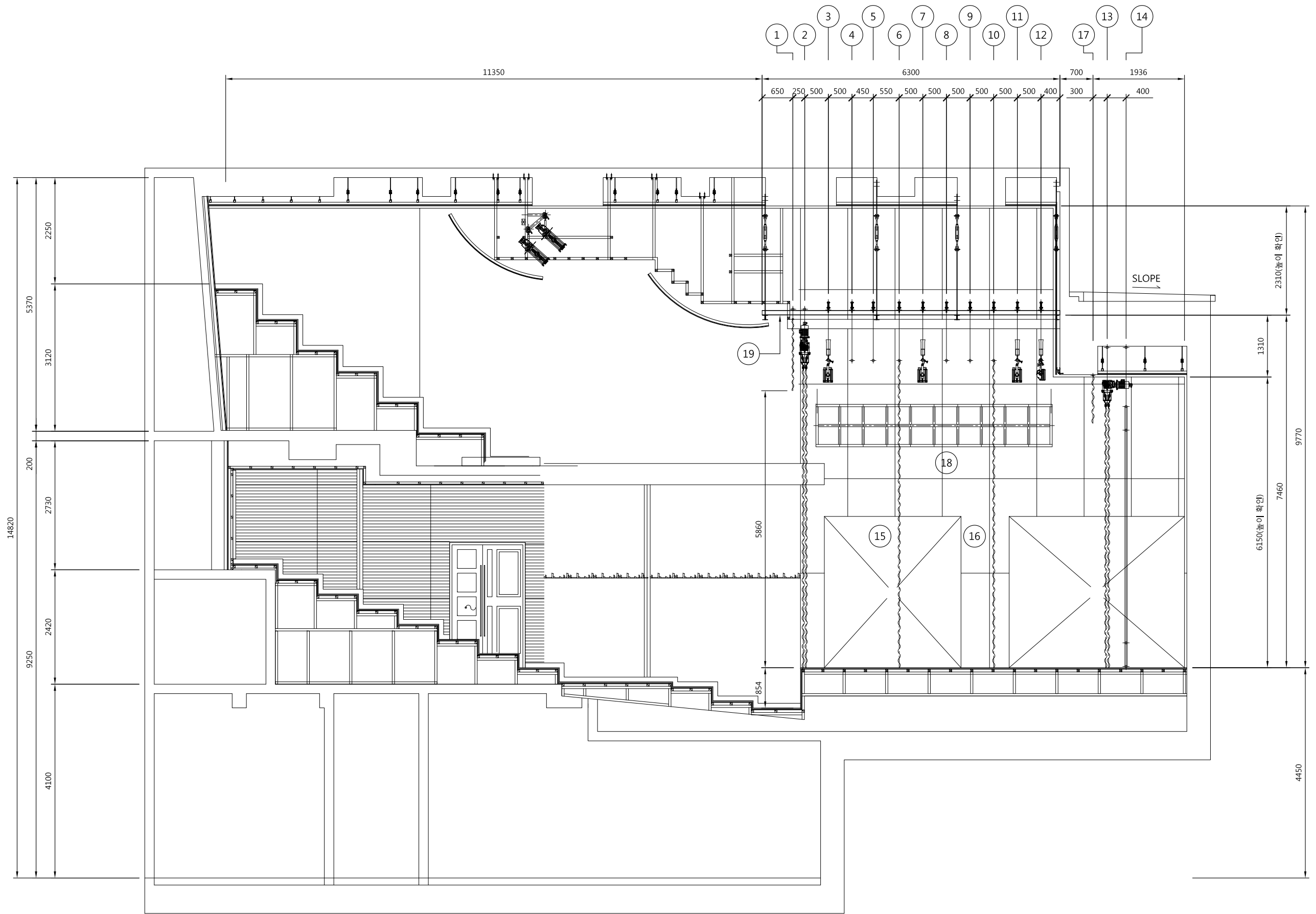
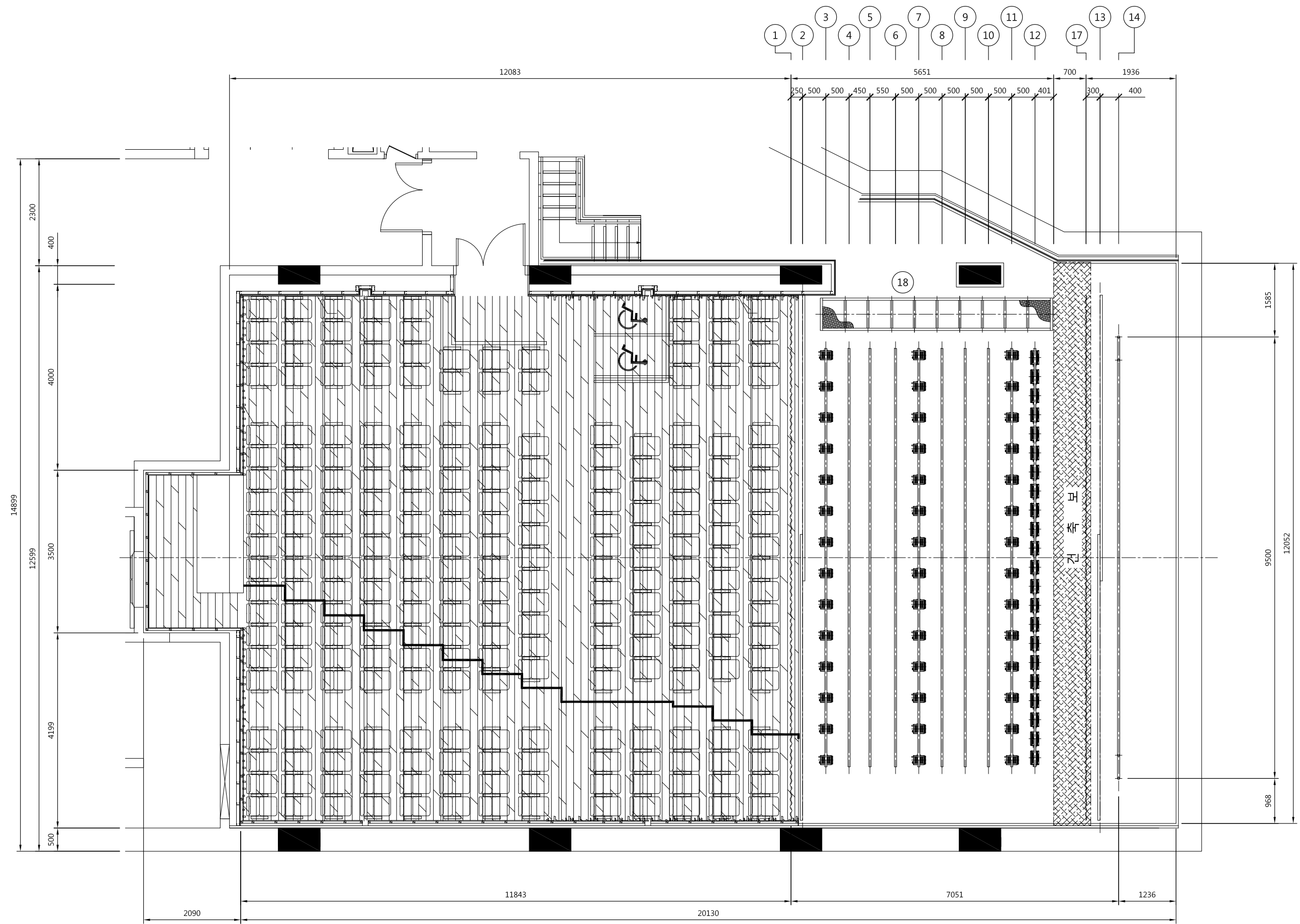


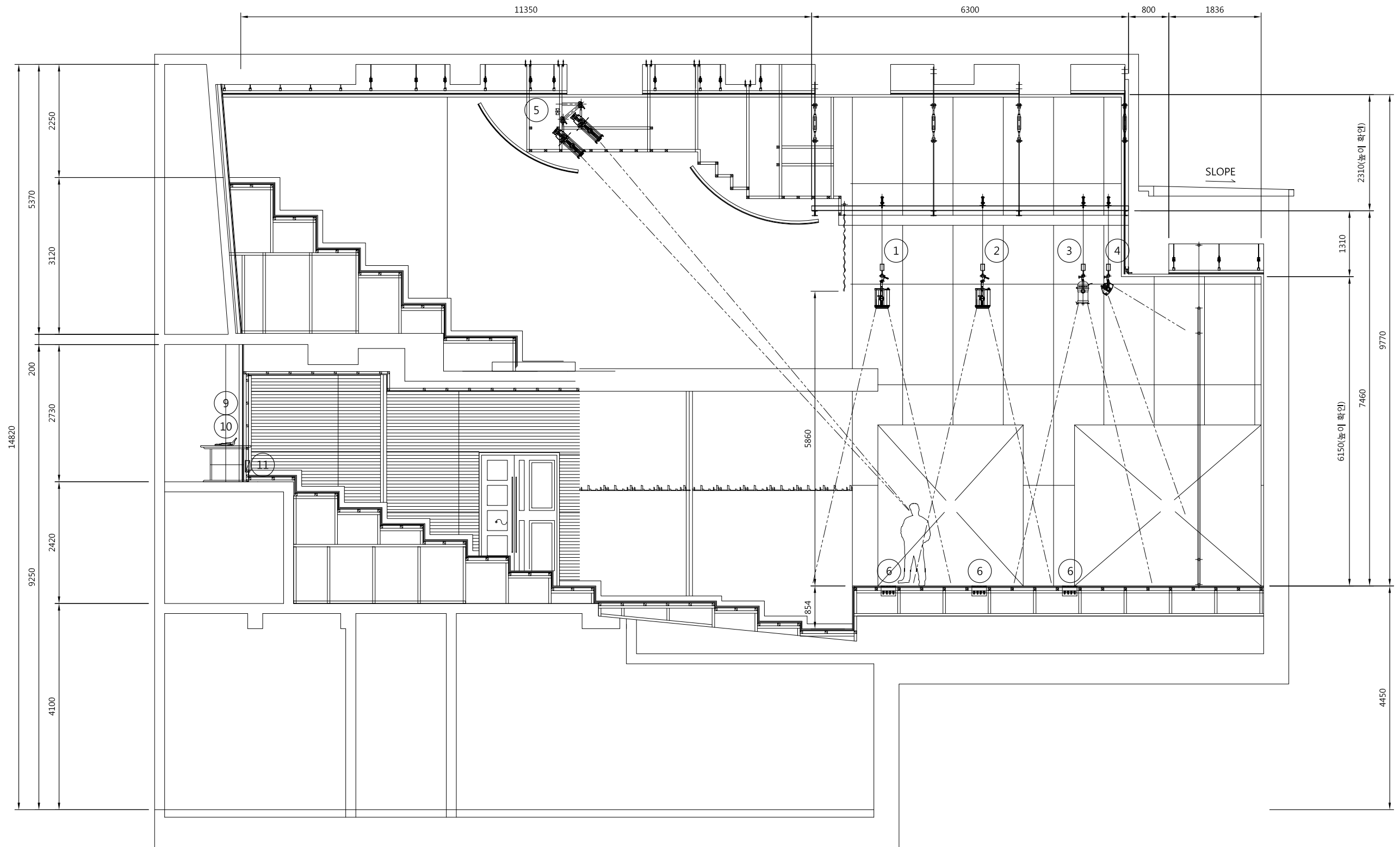
대학로 드림아트센터 중극장 무대기계 사양서

번호 (NO)	품 명 (DESCRIPTION)	규 격 (mm) (DIMENSION)	수 량 (Q'TY)	구동용량 (KW) (POWER)	속도(m/min) (SPEED)	구 동 방 식 (DRIVE TYPE)	사 용 하 중 (Kg) / (LOAD)				비 고 (REMARK)
							자중 (DEAD LOAD)	적재하중 (LIVE LOAD)	웨이트하중 (WEIGHT LOAD)	총 하 중 (TOTAL LOAD)	
1	HEAD CURTAIN no.1	11,300L x 1,500H	1	-	-	FIXED TYPE(그리드 고정)	50	-		50	
2	DRAW CURTAIN	11,000L x 6,300H	1	0.75kW x 4P	0 ~ 30	원치방식(WINCH TYPE)	500	-		500	
3	SUSPENSION LIGHT BATTEN no.1	9,000L (Telescopic 1m)	1	2.2kW x 4P	0 ~ 14.5	원치방식(WINCH TYPE)	150	350		500	
4	FLY SET BATTEN no.1	9,000L (Telescopic 1m)	1	2.2kW x 4P	0 ~ 14.5	원치방식(WINCH TYPE)	100	400		500	
5	FLY SET BATTEN no.2	9,000L (Telescopic 1m)	1	2.2kW x 4P	0 ~ 14.5	원치방식(WINCH TYPE)	100	400		500	
6	FLY SET BATTEN no.3	9,000L (Telescopic 1m)	1	2.2kW x 4P	0 ~ 14.5	원치방식(WINCH TYPE)	100	400		500	
7	SUSPENSION LIGHT BATTEN no.2	9,000L (Telescopic 1m)	1	2.2kW x 4P	0 ~ 14.5	원치방식(WINCH TYPE)	150	350		500	
8	FLY SET BATTEN no.4	9,000L (Telescopic 1m)	1	2.2kW x 4P	0 ~ 14.5	원치방식(WINCH TYPE)	100	400		500	
9	FLY SET BATTEN no.5	9,000L (Telescopic 1m)	1	2.2kW x 4P	0 ~ 14.5	원치방식(WINCH TYPE)	100	400		500	
10	FLY SET BATTEN no.6	9,000L (Telescopic 1m)	1	2.2kW x 4P	0 ~ 14.5	원치방식(WINCH TYPE)	100	400		500	
11	SUSPENSION LIGHT BATTEN no.3	9,000L (Telescopic 1m)	1	2.2kW x 4P	0 ~ 30	원치방식(WINCH TYPE)	150	350		500	
12	UPPER HORIZONT LIGHT BATTEN	9,000L (Telescopic 1m)	1	2.2kW x 4P	0 ~ 14.5	원치방식(WINCH TYPE)	100	350		500	
13	COVER CURTAIN	11,000L x 5,500H	1	0.75kW x 4P	0 ~ 30	원치방식(WINCH TYPE)	500	-		500	
14	HORIZONT CURTAIN	9,500L x 5,500H	1	-	-	FIXED TYPE(그리드 고정)	500	-		500	
15	WING CURTAIN no.1	2,500L x 6,400H	1	-	-	세트바튼 착탈식	50	-		50	
16	WING CURTAIN no.2	2,500L x 6,400H	1	-	-	세트바튼 착탈식	50	-		50	
17	HEAD CURTAIN no.2	11,300L x 1,000H	1	-	-	FIXED TYPE(그리드 고정)	50	-		50	
18	장치 반입용 리프트	5,000L x 900H x 600D	1	2.2kW x 4P	5	원치방식(WINCH TYPE)	300	500		800	
19	GRID IRON	구동부 및 활차 유지 보수	1	-	-	-	-	-		-	
20	MAIN POWER PANEL	AXIS CONTROL SYSTEM	1	-	-	-	-	-		-	
21	SUB POWER PANEL	-	1	-	-	-	-	-		-	
22	CONTROL CONSOLE	-	1	-	-	-	-	-		-	
23	PIPING & WIRING	-	1	-	-	-	-	-		-	

	무대기계장치 TOTAL LOAD	25.7 kW							
	사용율(%)	100%							
	무대기계장치 사용 LOAD	25.7 kW (50 [A])	∴ 무대기계장치 MAIN MCCB 4P 50A						







NO	DESCRIPTION	DIMENSION
1	NO.1 SUSPENSION LIGHT FLY DUCT	9,000L(FLY DUCT)
2	NO.2 SUSPENSION LIGHT BATTEN	9,000L(FLY DUCT)
3	NO.3 SUSPENSION LIGHT BATTEN	9,000L(FLY DUCT)
4	UPPER HORIZONT LIGHT FLY DUCT	9,000L(FLY DUCT)

NO	DESCRIPTION	DIMENSION
5	CEILING LIGHT FLY DUCT	9,000L(FLY DUCT)
6	NO.1~3 FLOOR BOX[R&L]	3P 30A 4OUT, XLR 1EA
7	DIMMER UNIT RACK	DIM:96CIR
8	MAIN & RD PANEL	RD:20CIR

NO	DESCRIPTION	DIMENSION
9	COMPUTER CONSOLE	4096CH
10	SUB CONTROL CONSOLE	RD:20CIR
11	CONNECTOR BOX	

